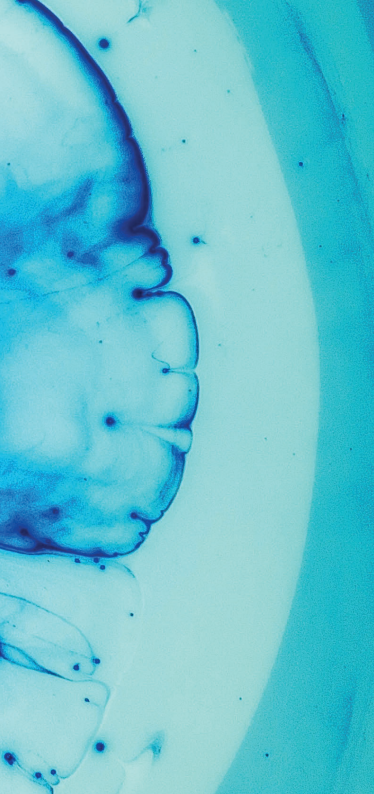


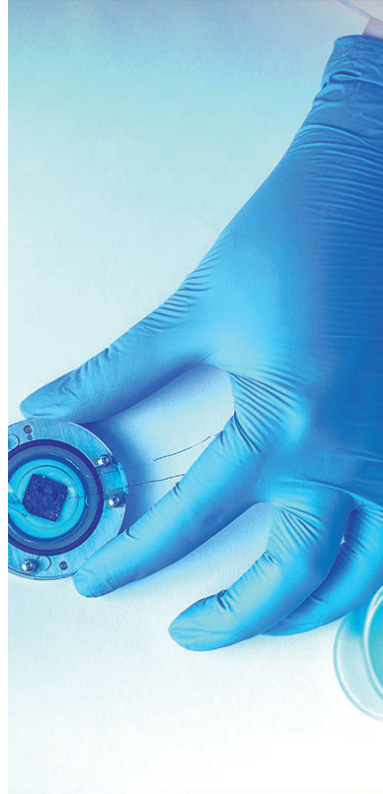
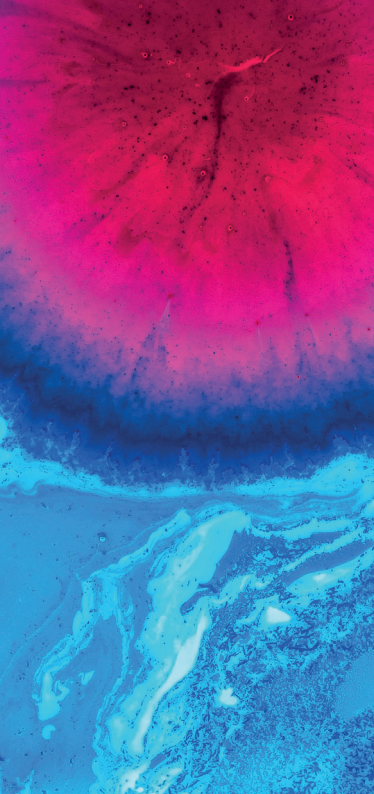


RCPTM



Obsah

Varianty loga - barevné	X
Rozbor loga	X
Varianty loga - černobílé	X
Písmo	X
Aplikace	X





RCPTM

**Regional Centre
of Advanced Technologies
and Materials**



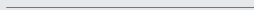
PANTONE
P 106-7 U

gradient



PANTONE
P 99-16 U

solid color



C0 M0 Y0 K85

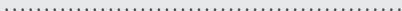


RCPTM

**Regional Centre
of Advanced Technologies
and Materials**



texture



solid color

C0 M0 Y0 K85



C0 M0 Y0 K85



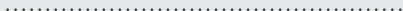
RCPTM

**Regional Centre
of Advanced Technologies
and Materials**



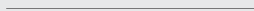
PANTONE
P 106-7 U

pattern



PANTONE
P 99-16 U

solid color



C0 M0 Y0 K90

RCPTM

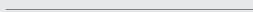
**Regional Centre
of Advanced Technologies
and Materials**



gradient



solid color



PANTONE
P 106-7 U

PANTONE
P 99-16 U

C0 M0 Y0 K85

RCPTM

Regional Centre of Advanced
Technologies and Materials





Regional Centre
of Advanced Technologies
and Materials

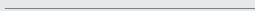


texture



C0 M0 Y0 K85

solid color



C0 M0 Y0 K85

RCPTM

**Regional Centre of Advanced
Technologies and Materials**



texture



C0 M0 Y0 K85



Regional Centre
of Advanced Technologies
and Materials



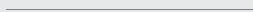
PANTONE
P 106-7 U

pattern



PANTONE
P 99-16 U

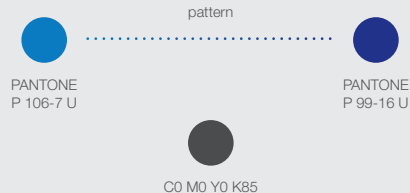
solid color



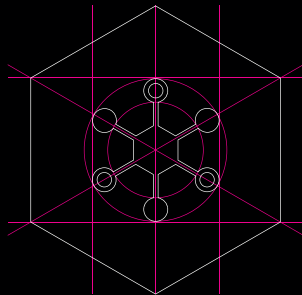
C0 M0 Y0 K85



**Regional Centre of Advanced
Technologies and Materials**



Rozbor loga - symbol



RCPTM





RCPTM

**Regional Centre
of Advanced Technologies
and Materials**



C0 M0 Y0 K100



RCPTM

**Regional Centre
of Advanced Technologies
and Materials**



CO MO YO KO



RCPTM

Regional Centre
of Advanced Technologies
and Materials



CO MO YO KO

RCPTM

**Regional Centre of Advanced
Technologies and Materials**



C0 M0 Y0 K100

RCPTM

Regional Centre of Advanced
Technologies and Materials



CO MO YO KO

RCPTM

**Regional Centre of Advanced
Technologies and Materials**



CO MO YO KO

Použité písmo

INTRO BLACK CAPS

(upravený)



RCPTM

Regional Centre
of Advanced Technologies
and Materials



Nexa Extra Bold

RCPTM | Regional Centre
of Advanced Technologies
and Materials

Prof. Radek Zbořil, Ph.D.
general director

tel: (+420) 585 634 762
e-mail: radek.zboril@upol.cz
Stechbítelů 27, Olomouc, Czech Republic







Prof. Radek Zbořil, Ph.D.

general director

tel: (+420) 585 634 762

e-mail: radek.zboril@upol.cz

Šlechtitelů 27, Olomouc, Czech Republic

Aplikace

DESKY

